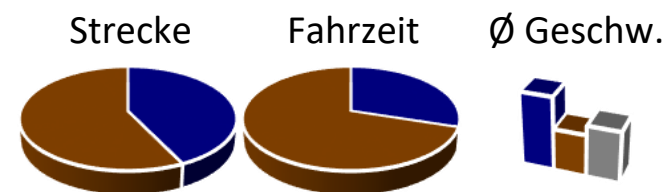
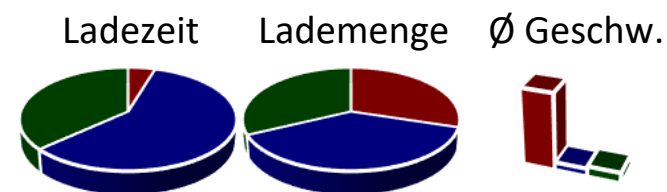


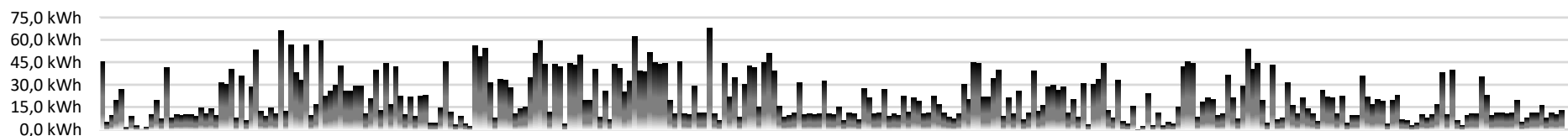
Fahrdaten	Strecke	Fahrzeit	Ø Geschw.
Autobahn	10463 km	119 Std.	87,9 km/h
Straße	13996 km	278 Std.	50,3 km/h
Summe	24459 km	397 Std.	61,6 km/h



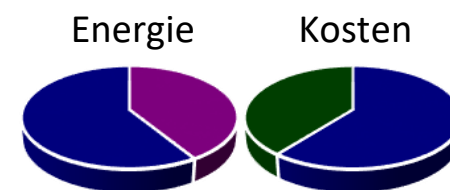
Ladedaten	Ladezeit	Lademenge	Ø Geschw.
SuC+DC	22 Std.	1855 kWh	1,40 kW/min
11kW	280 Std.	2358 kWh	0,14 kW/min
frei	176 Std.	2000 kWh	0,19 kW/min
Summe	479 Std.	6213 kWh	0,22 kW/min



einzelne Ladevorgänge



Verbrauch	Energie	Ø / 100km	Kosten _{30ct/kWh}	Ø / 100km
Tesla	4344 kWh	17,76 kWh	1.303 €	5,33 €
Fahrdaten	4227 kWh	17,28 kWh	1.268 €	5,18 €
Ladestation	6213 kWh	25,40 kWh	1.864 €	7,62 €
Ladestation Rechnungen (wirkliche Kosten)			1.210 €	4,95 €



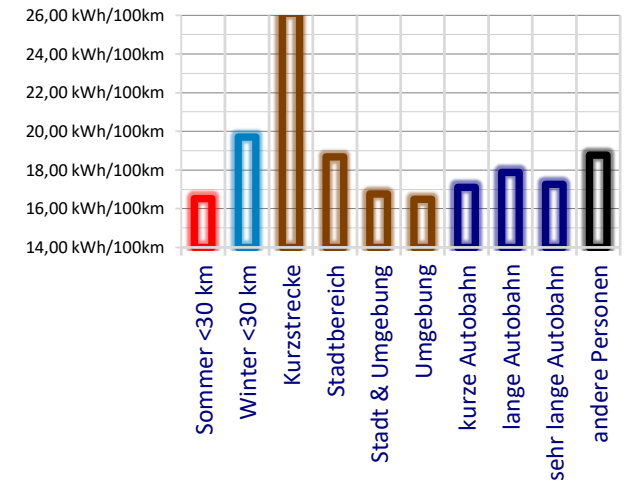
Tesla Display	6.3.2022	24459 km	4344 kWh
----------------------	----------	----------	----------

6.3.2022

Durchschnittsverbrauch auf verschiedenen Streckenabschnitten

671x warm (Juni...August ...30 km)	16,52 kWh/100km
557x kalt (Dezember...Februar ...30 km)	19,71 kWh/100km
1186x Kurzstrecke (...2 km)	26,11 kWh/100km
314x Stadtbereich (2...5 km)	18,68 kWh/100km
636x Stadt & Umgebung (5...10 km)	16,75 kWh/100km
361x Umgebung (10...30 km)	16,49 kWh/100km
64x kurze Autobahn (30...100 km)	17,11 kWh/100km
27x lange Autobahn (100...200 km)	17,88 kWh/100km
17x sehr lange Autobahn (200... km)	17,26 kWh/100km
45x andere Personen	18,77 kWh/100km

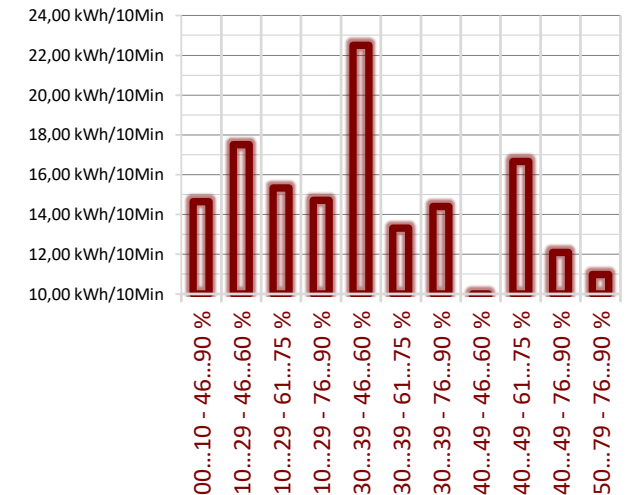
Ø 18,61 kWh/100km



durchschnittliche Ladegeschwindigkeit bei Tesla Supercharger

Anfangsladestand	Endladestand	Ladegeschwindigkeit
Start: 00% ... 10%	Ende: 46% ... 99%	14,65 kWh/10Min
Start: 10% ... 29%	Ende: 46% ... 60%	17,50 kWh/10Min
	Ende: 61% ... 75%	15,33 kWh/10Min
Start: 10% ... 29%	Ende: 76% ... 99%	14,72 kWh/10Min
	Ende: 46% ... 60%	22,50 kWh/10Min
Start: 30% ... 39%	Ende: 61% ... 75%	13,32 kWh/10Min
	Ende: 76% ... 99%	14,40 kWh/10Min
Start: 40% ... 49%	Ende: 46% ... 60%	16,67 kWh/10Min
	Ende: 61% ... 75%	12,09 kWh/10Min
Start: 40% ... 49%	Ende: 76% ... 99%	10,98 kWh/10Min

Ø 15,22 kWh/10Min



Ladestation	Tesla	EnBW mobility+			Maingau Einfach Strom Laden		ewe-GO Punktladung
		Standard	Viellader	EnBW/ADAC	Normal	Kunde	
AC (11 kW) eigene		45 ct/kWh	36 ct/kWh	<u>38 ct/kWh</u>	49 ct/kWh	39 ct/kWh	42 ct/kWh
AC (11 kW) andere		45 ct/kWh	39 ct/kWh	42 ct/kWh	49 ct/kWh	<u>39 ct/kWh</u>	49 ct/kWh
+ Gebühren		>4 Std. = 10 ctminute (max 12 €)			>4 Std. = 10 ctminute		
DC (schnell) eigene	<u>45 ct/kWh</u>	55 ct/kWh	46 ct/kWh	<u>48 ct/kWh</u>	59 ct/kWh	49 ct/kWh	52 ct/kWh
DC (schnell) andere		55 ct/kWh	49 ct/kWh	52 ct/kWh	59 ct/kWh	<u>49 ct/kWh</u>	59 ct/kWh
DC (schnell) Ionity		79 ct/kWh	79 ct/kWh	79 ct/kWh	75 ct/kWh	75 ct/kWh	<u>59 ct/kWh</u>
+ Gebühren	wenn voll	>4 Std. = 10 ctminute (max 12 €)			>1 Std. = 10 ct _{minute}		-
Grundgebühr		-	5,99 €monat	-	-	-	-

